



THURSDAY, OCTOBER 26, 2023

THE BOSTON SUN

PUBLISHED EVERY THURSDAY

SERVING BACK BAY - SOUTH END - FENWAY - KENMORE

CAC ponders Star Market redevelopment project in the Fenway at virtual meeting

By Dan Murphy

The proposed redevelopment of the Star Market site in the Fenway in connection with the filing of a Draft Project Impact Report was the topic at hand during a city-sponsored Citizens Advisory Committee meeting held virtually on Monday, Oct. 23.

Boston-based commercial real-estate developer Samuels & Associates intends to develop the approximately 2.38 acre, L-shaped acre site at 1380-1420 Boylston St., which is currently occupied by a single-story Star grocery store, a decommissioned gas station, and surface parking lots, into to a mixed-use building comprising four interconnected sections.

The approximately 553,000

gross square foot project will include approximately 498,000 square feet of office/research and development space; approximately 17,000 square feet of retail/restaurant/service and accessory uses and facilities on the ground floor; approximately 33,000 square feet of enclosed loading and back of house space; approximately 5,000 square foot civic building, which could serve as a Boston Public Library neighborhood branch; over half an acre of landscaped green space along the Emerald Necklace; and underground parking to support the building's programming.

Peter Sougarides, a Samuels & Associates principal, detailed the \$55 million in community bene-

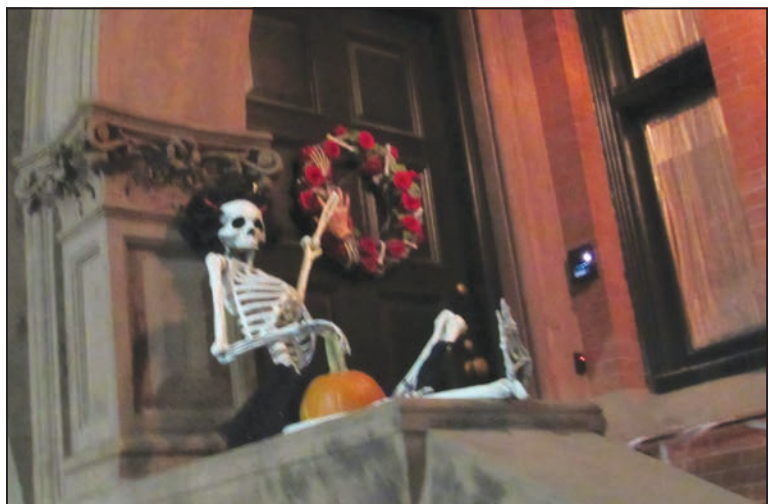
(STAR MARKET Pg. 4)



DEREK KOUYOUMJIAN PHOTO

Shown top: Dance crew, BUMixx, takes advantage of the open streets to perform while onlookers are entertained. Shown bottom: Crowds of pedestrians take advantage of the beautiful early fall day to stroll Newbury Street unhindered by motor traffic during the final installment of Open Newbury Street for the season. See more photos on Pages 6-8

HALLOWEEN TAKES HOLD IN THE BACK BAY



D. MURPHY PHOTO

A spooky skeleton on the stoop at 25 Exeter Street. See more Halloween spirit on Page 5.

Spaghetti Dinner another rousing success for WLP

Special to Sun

Over the past four decades, Women's Lunch Place (WLP) has built a strong suite of programs and services that allow us to meet the growing needs of vulnerable women. Just as donors have helped lay the foundation for our proactive programming, the Newbury Street women's day shelter is helping to lay the foundation for its guests to rebuild their lives.

The Spaghetti Dinner, held Friday, Oct. 20, at the Fairmont Copley Hotel ballroom, was a rousing success, with a sold-out crowd of more than 400 guests and over \$500,000 raised for Women's Lunch Place. Lisa Hughes acted as the host, and Treble Threat, an a cappella group from Berklee, provided a moving musical performance.

Sen. Lydia Edwards and City Councilors Sharon Durkan, Ed Flynn and Ruthzee Louijeune were among the elected officials on hand for the event.

Dr. Jim O'Connell, founding physician and President of Boston Health Care for the Home-

(WLP, Pg. 9)

Have a Happy Halloween!



EDITORIAL

WE MUST CONFRONT THE NEW AXIS OF EVIL

When former President George W. Bush coined the term “Axis of Evil” to refer to the nations of Iran, No. Korea, and Iraq in his 2002 State of the Union speech, his comments were largely derided. Even in the aftermath of the terrorist attack on the World Trade Center just a few months previously, Bush’s juvenile comments were seen as jingoistic hyperbole about three countries that posed no real threat to the United States.

At the time of Bush’s speech, Russia was a vastly-diminished power. China was viewed as an emerging economic powerhouse with no military ambitions. As for Iran, it was causing problems on a small scale in its realm of influence, but it was al-Qaeda and Osama bin Laden who had planned the 9/11 attacks.

But times have changed. Twenty years later, there has been a substantial realignment in the world order. Russia has re-emerged from the ashes of the former Soviet Union to pose a military threat in Eastern Europe (though Vladimir Putin’s army has been shown to be a paper tiger). China has expanded its military presence and capabilities dramatically under Xi Jinping. The Iranians under Ayatollah Ali Khamenei have undertaken the development of a nuclear weapon and are the sponsors of various terrorist groups, including Hamas, Hezbollah, and the Houthis (who are in Yemen), who are causing chaos throughout the Middle East.

What all three of these nations have in common is that they are run by unyielding tyrants: Putin, Xi, and Khamenei are brutal rulers who essentially have become dictators for life. There is not even a pretense of democracy in their countries and dissent of any kind is met with arrests, beatings, torture, sham trials, long jail sentences, and even death -- and that’s just for expressing an opinion critical of their government’s policies.

Ukraine and Israel presently are bearing the brunt of the assaults by these dictatorial regimes, with Taiwan poised to be next in line.

Understandably, Americans do not want to become involved in these conflicts, especially after we only just ended our own long war in Afghanistan. But the simple reality is that freedom isn’t free and this unholy trinity have been supporting each other, financially, militarily, and in other ways, to undermine America and our allies.

Fortunately, President Joe Biden and the vast majority of members of Congress, Republicans and Democrats, recognize that we must do whatever we can to thwart this new Axis of Evil. The inconvenient truth is that only America can lead the free world against the forces of oppression. Burying our head in the sand is not an option.

THE DOMINOES ARE FALLING TOWARD TRUMP

With the crisis in the Middle East and the dysfunction among Congressional Republicans garnering all of the headlines these days, the many trials and tribulations of former President Donald Trump have been relegated in recent weeks to what we in the newspaper business refer to as “below the fold” news stories.

But the recent plea bargain agreements with the Fulton County District Attorney of two of Trump’s lawyers, Sidney Powell and Kenneth Chesebro, who helped him concoct various schemes to steal the election in Georgia, portend the inevitable march in the case against Trump himself for his role in masterminding the attempted swindle which was highlighted by that now-infamous phone call with the Georgia Secretary of State that captured Trump’s own words in an audio recording.

Trump will try to delay his own trial for as long as possible. But as his co-conspirators realize that jeopardizing their careers -- not to mention facing the prospect of a lengthy sentence in a Georgia state prison -- are not worth it for a man who does not have their backs, they one-by-one will decide to come clean and tell the truth.

And as they do so, Donald Trump himself will move closer-and-closer to being held accountable for his efforts to undermine our democracy.

LETTERS TO THE EDITOR

SEBA OPPOSES DISPENSARY AT 1220 WASHINGTON ST.

South End Business Alliance (SEBA) has been supporting South End businesses since the 1980s. Our board has voted to oppose a cannabis dispensary at 1220 Washington Street because losing a restaurant at this location would have a major impact to the neighborhood.

A restaurant at 1220 is pivotal to the progress and safety of the neighborhood. The South End is known for its diverse restaurants and they have been a catalyst for our community’s energy and retail growth. Restaurants bring life to the street, particularly at night when most other businesses are closed in the evening. This “walk ability” attracts other retailers to lease vacant spaces.

If 1220 is no longer a restaurant or similar food and beverage outlet; then at night (Washington Street from Waltham Street to Herald Street) more than a half-mile (0.7 mile) will be uninviting and lack street activity in that stretch of closed service businesses and vacant retail spaces. Leaving Meyers and Chang and Oishii Boston restaurant. Washington Street is still striving to be a vibrant and active retail district.

In comparison, there is no other location in this section of Washington Street that is suitable for restaurant use.

The 1220 location is the oldest restaurant in Boston’s South End and has been drawing people for 50+ years. It has a liquor license, common victualler license, outdoor seating and customer parking. All of which take many months and a substantial financial investment to obtain today. Most importantly, it has

proper venting and no other location on this part of Washington Street where restaurant venting can be installed. Nearby newer buildings such as Wilkes Passage 1313 Washington and Rollins Square failed to include it.

The South End Business Alliance is confident that another qualified restaurant operator can be found for 1220 and we offer our resources to help find a suitable tenant.

The South End Business Alliance is not against cannabis dispensaries and has not opposed them in the past.

What we oppose is one at this particular location, which as a restaurant is pivotal to the health, safety and development of the neighborhood.

Sincerely,

Elizabeth A. Beutel
President, South End
Business Alliance (SEBA)

CARDINAL PUBLISHES LETTER TO THE ARCHDIOCESE ON MAJOR HUMANITARIAN AND SOCIETAL CRISIS

Dear Editor:

Cardinal Seán O’Malley has written to pastors and the parishes of the Archdiocese regarding a growing humanitarian and societal crisis that is building in the Commonwealth and Archdiocese of Boston. The issue involves the fate of immigrants arriving daily in Massachusetts, and in need of basic shelter and compassionate care.

The Cardinal highlights the immediate challenges and growing crisis and offers guidance to parishes how they can assist in meeting essential needs of a rising immigrant population. The

following is the text of the letter:

I write to you today to speak about a major humanitarian and societal crisis that is building in the State of Massachusetts and within our Archdiocese. Please take the time to review this letter with your parish staff and prepare your parishioners to be ready and willing to assist. The challenge is the fate of immigrants arriving daily in Massachusetts, and in need of basic shelter and compassionate care and welcome.

First, allow me to give a brief explanation of the crisis that we are currently facing, but which is sure to become much larger. Next, I will outline what we have done and what we are doing. Finally, I will ask for specific help, so that we can act now before the need becomes overwhelming.

I. The Situation: Presently there are 7000 families being cared for in state sponsored shelters (approximately 20,000 individuals); by October 31st the expectation is that 7500 families will be with us.

Gov. Healey and Lt. Gov. Driscoll have been deeply committed and determined to care for a rising immigration population, but they have also been honest in saying that the Commonwealth faces a mounting crisis beyond its capacity to respond effectively.

II. What we have done: The Archdiocese, through Catholic Charities, St. Mary’s Center for Women and Children and the Archdiocesan Planning Office for Urban Affairs has worked closely with the Healey-Driscoll Administration and with other non-profit agencies even as the

(LETTER Pg. 3)

THE BOSTON SUN

PRESIDENT/EDITOR: STEPHEN QUIGLEY (STEPHEN.QUIGLEY@THEBOSTONSUN.COM)

MARKETING DIRECTOR: DEBRA DIGREGORIO (DEB@THEBOSTONSUN.COM)

ART DIRECTOR: KANE DIMASSO-SCOTT

REPORTERS: DAN MURPHY, DMRPH4@GMAIL.COM

NEWS IN BRIEF

'STORY TIME WITH LIBRARIAN MARGARET COMING TO USES

Story Time with Librarian Margaret will take place on Thursdays, Oct. 26,; Nov. 2, 9, 16, and 30; and Dec. 7, 14, 21, and 28 at 10:30 a.m. at United

South End Settlements, located at 48 Rutland St.

The program, which is presented in partnership with USES, welcomes babies to preschoolers and their caregivers to join in for stories, songs, dance, art, and play time (with *arts and crafts

LETTER (from pg. 2)

flow of immigrants has increased geometrically in the last few months. All three of those agencies have expanded capacity to address both the short and long-term needs for housing and supportive services. Over these past months, we have offered the State the use of 8 of our buildings, which we hope it will be able to authorize and use. In addition, some of our parishes have already received new shelters and people into their communities as the Commonwealth has greatly expanded its shelter capacity. The Archdiocese has offered assistance to those parishes, and we will continue to offer help to any parishes and communities we are not yet aware of needing assistance. As noted above, our three Archdiocesan affiliated agencies are deeply engaged in this crisis. Our relationship with the Healey-Driscoll administration has been constant and consistent. Recently, we have partnered with our very effective Saint Vincent de Paul Society to plan for how we can prepare for the cold weather coming; most of the recently arrived families are from warmer climates.

III. How can each and every parish help: The challenge is a local one in the sense that only some of the neighborhoods and parish communities will deal with shelters in their areas; however, the challenge is for all of us as an Archdiocese. The Saint Vincent de Paul Society has the appropriate storage and ability to collect and distribute items directly to those in need. Therefore, my request is that you work with them in your parishes/collaboratives for a drive this November prior to the cold weather.

Accordingly, I am asking parishes to consider the following:

1. If you do not have a St. Vincent de Paul bin in your parish, I urge you to please contact their vendor directly, CMRK, which delivers their bins to parishes. Simply call (508) 351-9000 and

ask for Patrick to schedule a delivery.

2. Announce this invitation and the reason for it to your parishioners and invite them to donate winter coats, boots, socks which will be picked up on November 18 just prior to Thanksgiving.

3. The St. Vincent de Paul Society will pick up the clothing, store it at its facility in Stoughton, and then distribution will be made to those in shelters throughout the Archdiocese.

4 In addition to winter clothing, other resources which can be donated at the same time and in the same bins include the following items: diapers, toothbrushes (adult and child size), toothpaste, soap, deodorant, mouthwash, combs, lotion, shampoo, washcloth, and Kleenex tissues.

5. Beyond these immediate actions, there may arise a time when all shelters are filled to capacity and weather conditions require immediate assistance for families in the New England winter. If this occurs offering short-term critical care and shelter in the biblical sense of "welcoming the stranger" will be the appropriate response from the Archdiocese as a whole. If you have buildings for this short-term purpose, please contact Fr. Bryan Hehir's office at (617) 746-5738 or (617) 746-5733.

I stress that this is a crisis but is only going to expand. I offer this invitation in the spirit of Pope Francis who has asked us as Catholics to watch the "peripheries" of society where suffering is located. In our time, migrants and refugees are among the most vulnerable individuals and families in the United States. It is my hope and desire that as a Church we respond generously and effectively.

With the assurance of my prayers and gratitude for your service to the Church,

Devotedly yours in Christ,
Cardinal Sean O'Malley

to follow for ages 2 years old and up) and is designed to draw children to love books, and to encourage interactive play with each other.

For more information, visit www.bpl.org.

VIRTUAL MEETING ON BOWKER OVERPASS BRIDGE REPLACEMENT AND NEW BRIDGE CONSTRUCTION

MassDOT (the Massachusetts Department of Transportation) will hold a virtual meeting on the Bowker Overpass Bridge superstructure replacement and new bridge construction on

Thursday, Oct. 26, from 6 to 7:30 p.m.

The proposed project consists of replacing and widening the bridge superstructure of the existing Bowker Overpass bridge that spans over I-90, MBTA's Worcester Commuter Rail Line, and Ipswich Street and reconfiguring the ramps to and from Commonwealth Avenue. The project includes bridge widening to the west and the elimination of the existing down ramp structure that spans the Muddy River to Commonwealth Avenue. The proposed project will provide bridge and roadway safety improvements, increase vertical clearance, improve seismic resili-

ency, and enhance the public realm with improved multi-use pathway connections to the adjacent Charlesgate and Back Bay Fens parklands. MassDOT will use staged construction to maintain traffic and to accommodate utilities during construction.

A secure right-of-way is necessary for this project. Acquisitions in fee and permanent or temporary easements may be required. MassDOT is responsible for acquiring all needed rights in private or public lands. MassDOT's policy concerning land acquisitions will be presented at the hearing.

Register for the online meeting at https://us02web.zoom.us/webinar/register/WN_7u03f9quSge6V1cXWwx-Orw#/registration.

REP. LIVINGSTONE'S VIRTUAL OFFICE HOURS

Rep. Jay Livingstone will hold virtual office hours via Zoom on Thursday, Oct. 26, from 3 to 4 p.m.; email Cassidy.Trabilcy@mahouse.gov to receive the link for virtual office hours.

AUTHOR TALK WITH SARA DIVELLO SET FOR OCT. 26 AT COPLEY BPL

An author talk with Sara DiV-

ello, who will be discussing her latest thriller "Broadway Butterfly," on Thursday, Oct. 26, from 6 to 7:30 p.m. at the Commonwealth Salon at the Central Library at Copley Square at 700 Boylston St. The talk begins at 6 p.m., followed by an author signing at approximately 7 p.m., facilitated by Trident Booksellers and Café.

True crime novelist, founder of Mystery and Thriller Mavens, and a lifelong fan of all things murder and mayhem, Sara DiVello will spill the tea on the crime of the century in conversation with New York Times Best Selling Author Laura Zigman as they discuss Sara DiVello's 2023 thriller, "Broadway Butterfly." The authors will also discuss creativity, process, and the wild, winding path to publication. Following the conversation, there will be time for audience Q&A.

This event is accessible to people with disabilities. To request a disability accommodation and/or language services, contact: Christina Jones at southend@bpl.org, by Thursday, Oct. 12. Please allow at least two weeks to arrange for accommodations.

Registration is required at bit.ly/saradivello.

(NEWS BRIEFS Pg. 10)



Virtual Public Meeting

1400 Boylston & Zoning Amd. Meeting

NOVEMBER

6

6:00 PM - 8:00 PM

Zoom Link: bit.ly/3SaSlen

Toll Free: (833) 568 - 8864

Meeting ID: 160 851 8527



Close of Public Comment

Period:

12/4/2023

website:

bit.ly/1400BoylstonStreet

The BPDA will host a Public Meeting to discuss a proposed project at 1400 Boylston Street and an associated proposed zoning amendment to Article 66, The Fenway neighborhood zoning article. Discussion regarding the proposed project will focus on the proposed public open space and civic space. The proposed zoning amendment would affect the parcel on which the proposed civic space is located. The meeting will include presentations from the proponent and BPDA staff, followed by Q&A and comments from the public.

The information at this meeting is important. Interpreting services are available. If you require translation services, please contact quinn.w.valcich@boston.gov no later than 10/30/23.

对于您作为波士顿的居民和利益相关者, 本次会议的信息至关重要。与会的语言服务免费。如果您需要这些语言翻译服务, 请在下方的日期时间之前联系 (quinn.w.valcich@boston.gov) : 10/30/23.

作為波士頓居民和利益相關者, 這次會議中的資訊對您非常重要。我們可以向您免費提供語言輔助服務。如果您要求這些服務, 請在以下時間之前聯絡 (quinn.w.valcich@boston.gov): 10/30/23.

mail to: **Quinn Valcich**
 Boston Planning & Development Agency
 One City Hall Square, 9th Floor
 Boston, MA 02201

phone: 617.918.4219
 email: quinn.w.valcich@boston.gov

BostonPlans.org | @BostonPlans

Teresa Polhemus, Executive Director/Secretary

Storybook Ball treats guests to another magical evening of fundraising

Special to the Sun

Mass General for Children's Storybook Ball brought nearly 500 people together at the Omni Hotel Boston at the Seaport to celebrate the hospital's outstanding work in the field of Adolescent Health, showcasing the expertise of MGfC primary care physicians, specialists and other caregivers that provide exceptional care day-in and day-out for adolescent and young adult patients.

Rachel and Bill Motley and Laura Will and David Nicholson co-chaired the 24th annual gala, which raised over \$1.9 million

for important research initiatives and vital patient care programs at MGfC.

Rafanelli Events provided a stunning backdrop inspired by the beloved children's book series, Frog and Toad. The Omni was transformed into a whimsical forest with large-scale storybook drawings and oversized trees, while tablescapes of river rocks, mushrooms and fiddleheads created a sense of adventure reminiscent of a walk through the woods.

Joanne Wolfe, MD, MPH, MGfC Physician-in-Chief; Allan M. Goldstein, MD, MGfC Surgeon-in-Chief; and William



Co-Chairs Bill and Rachel Motley, Physician-in-Chief Joanne Wolfe, MD, Co-Chairs Laura Will and David Nicholson, Surgeon-in-Chief Allan M. Goldstein.



Co-Chair Rachel Motley, MGH Chief Medical Officer William T. Curry, MD, Co-Chair Laura Will.

Curry, MD, Chief Medical Officer, Massachusetts General Hospital, led guests through a poignant speaking program and shared the inspiring story of adolescent patient Maegan's treatment for an eating disorder.

One of the highlights of the live auction, emceed by The Sports Hub's Rich Shertenlieb,

was a one-of-a-kind experience at the 150th anniversary of the Kentucky Derby courtesy of West Point Thoroughbreds. The package included a VIP backstretch tour and partial ownership in a thoroughbred racing horse, plus custom derby attire by designer Sue Sartor.

Guests enjoyed a special per-

formance by Andrew Marshall, finalist of NBC's "The Voice" Season 20 and a Boxford native who underwent treatment for leukemia at MGfC for almost four years. Carnival booth games like Corn Hole and "Operation" and a lively dance floor led by Mario the DJ rounded out the spectacular night.



Debra Williams, Hadley and T.J. Douglas.



Andrew Marshall, The Voice Season 20 Finalist.



Ange Uwimana and David Dusabirane.



Fiona and James Benenson.



PHOTOS BY MATT WEST
Henry and Jessica Schuck.



Brandon Truitt, Meagan Kolkmann and MGfC Chief of Adolescent and Young Adult Medicine Scott Hadland, MD.



Paige and Matthew Connell.



Rachel and MGfC Surgeon-in-Chief Allan M. Goldstein, MD.



Shelley Xu and Calvin Liou.



Walter and Sarah Donovan.

HALLOWEEN TAKES HOLD IN THE BACK BAY



The Grim Reaper peers over passersby near 21 Exeter St.



A pop up graveyard, spotted on Commonwealth Ave. near Exeter Street.



At 85 Marlborough St., this skeletal soloist serenades the dead with his canine companion.



5 Commonwealth Avenue is looking like catacombs.

D. Murphy Photos

Homes throughout the Back Bay are decorated in anticipation of Halloween.



Shown above and right, the residents at 209 Commonwealth Ave. spared no expense, decorating their yard with lights and life-size scary clowns.



STAR MARKET (from pg. 1)

fits from the project, including an \$18 million contribution to support the creation of Boston-based Transom Real Estate's 117-unit residential project (of which 48 percent would be affordable homeownership units) at 165 Park Drive in the Fenway.

An additional \$1.3 million has been earmarked to support additional affordable housing in partnership with the Fenway CDC (Community Development Corporation), said Sougarides, while an additional \$6.8 million has been allocated for linkage for housing and jobs, as well as another \$3 million for transportation and job improvements.

The project's promised community benefits also include a

\$12 million contribution to build a 5,000 square-foot, free-standing civic building on the project site, which would likely be programmed as a new Fenway neighborhood branch in response to the wishes of the community, added Sougarides.

Quinn Valcich, a project manager for the Boston Planning & Development Agency who served as the meeting moderator, said the city would be sponsoring a virtual meeting on Monday, Nov. 6, at 6 p.m. to discuss the project and an associated proposed zoning amendment. The conversation will focus on the project's civic and open space, including the proposed library branch. Visit <http://www.bostonplans.org/news-calendar/calendar/2023/11/06/1400-boylston-street-zoning-amendment-public-meeting> to register for the meeting and for more information.

Meanwhile, David Manfredi, CEO and founding principal of Boston's Elkus Manfredi Architects, said the project would create 1,000 linear feet of public-realm frontage along the Emerald Necklace.

The front of the proposed building would have tiered terraces for the use of tenants, which would step also down towards the Emerald Necklace while preserving views of Ramler Park, said Manfredi, and all loading and unloading of trucks

would take place within the building itself.

The sidewalks on the sides of the project facing Park Drive, Boylston Street, and Kilmarnock Street, respectively, would all be a minimum of 10 feet wide, said Keith LeBlanc, a project consultant, while the sidewalk would be narrower on the side facing Peterborough Street. A 6-foot bike track would also be installed along Park Drive and Boylston Street, he said.

Ian McKinnon, a transportation consultant with Boston-based Howard Stein Hudson, said curb-cuts had been reduced by 197 feet, including reducing the distance from 1400 Boylston St. to 401 Park Drive by 38 feet at the intersection of Boylston Street and Park Drive, which will be completely reconfigured, while four curb-cuts have been eliminated entirely.

Kathy McBride, a CAC member and Peterborough Street resident, said she had "so many good things to say [about the project] I don't even know where to start," but she also expressed concern about its potential impact on traffic in the Fenway, especially in light of other large development projects planned for the neighborhood.

Another CAC member, Tim Horn, applauded the new homeownership opportunities in the neighborhood that the project

will create and said he is "also really excited to see a library come to the fore."

Horn did express one concern, however, that the largely glass design of the civic building, which could become home to the library, would prove perilous to birds that unwittingly end up flying into it.

Likewise, Freddie Vieckley, also of the CAC, also praised the proposed development as a "great project" and lauded the developer for setting it back enough to not impede with view corridors, especially at sunset.

Vieckley implored the developer to find a way to help mitigate the expected wind impact at the corner of Boylston Street and Park Drive as people walk from the project site to the Fenway T stop.

"There has to be some way there to make the wind less powerful at that corner," she said.

Sougarides responded that the project team would take a closer look at the project's potential wind impact.

The public comment period on the DPIR for this project is open through Dec. 4; comments can be submitted via the BPDA's project page at <https://www.bostonplans.org/projects/development-projects/1400-boylston-street>, or by emailing them to Quinn Valcich of the BPDA at quinn.w.valcich@boston.gov.



COURTESY OF THE BOSTON PLANNING & DEVELOPMENT AGENCY

A rendering of the mixed-use development project proposed for the Star Market site in the Fenway.

FINAL OPEN NEWBURY STREET OF THE SEASON

Derek Kouyoumjian Photos

Oct. 15 was the final Sunday of Open Newbury Street and it was a perfect day for it. The weather was sunny and mild as throngs of pedestrians took advantage of the street being closed off to traffic to enjoy the famed thoroughfare. Musicians and performers entertained, vendors offered unique items, and the community was enjoyed by all.



A crowd of onlookers are entertained by the dance moves of The Hush Crew filming a K-Pop style dance video.jpg



Dance crew The Hush Crew bust out their moves to wow the crowd.jpg



BUMixx preformer Carly C meets William Hansch and Mochi after some impressive dancing.jpg



Dance crew The Hush Crew bust out their moves to wow the crowd2.jpg



Stephanie Sun makes friends with the inflatable person in front of Bo Concept.jpg



Shown clockwise from top-left: Alyssa, Lauren, Noah, and KP are young friends enjoying Open Streets.

Artist Erik Warn offers his work to all walking by. Lucy and Hazaa in front of the Uni Qlo store.



FINAL OPEN NEWBURY STREET OF THE SEASON



Eric Antonioui watches his nephew Elias show how impressed he was by the dance crew moves he witnessed.



Friends Cassandra Marconi and Lissbeth Martinez do some strolling and shopping together.



Ethan Webb and Alessandra Carpinito offer vintage clothing, shoes, and jewelry from their online store Bleeding Love.



The team at the MoreFun popup store offered many unique items for visitors to bring home.



This quartet of musicians who preformed bravely preferred not to be identified so as to continue their true work of fighting crime.



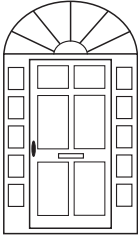
Another dance crew, BUMixx, films their performance while onlookers are entertained.



Elle and Louisa enjoy an ice cream break from strolling on Newbury Street.

BREWSTER & BERKOWITZ REAL ESTATE

Sally Brewster
Betsey Barrett



Ron Berkowitz
Mary Dunlavey

121 Mt. Vernon Street • Boston, Massachusetts 02108
www.brewberk.com

Sales

617.367.0505

Rentals

FINAL OPEN NEWBURY STREET OF THE SEASON



Gary Hickam @hickam.gary and Ben Lopatin @benjwlo play groovy music.



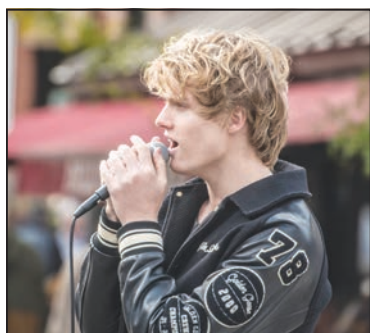
Lida and Claire hold their portrait made by street artist Peter.



Winnie and AnnMarie dance to Ryan Peter Murphy singing Love Was Made For Me And You.jpg



Trident Books was filled with browsing and dining.jpg



Berklee students Bradley Rittman (left) and Ryan Peter Murphy sing big band standards at the corner of Newbury and Fairfield streets.



Julia, Maya, Anna, and Elise are Miracle Mets fans happy to adorn their apartment with their shopping find.



The Chestnut Hill School

Open House: Oct. 29, 10 a.m. – 12 p.m.

Grow Today, Transform Tomorrow

Preschool through Grade 6 | tchs.org



Street artist Peter makes dollar portraits of pedestrians enjoying Open Main Streets.



Tina Williams and Robert Cagney take a rest at one of the pop up tables provided by the city.

WLP (from pg. 1)

less Program, delivered a keynote address. Dr. O'Connell's work overlaps with Women's Lunch Place in many ways. In WLP's medical clinic, his staff offers free mental and physical health care for the shelter's guests. Over 1,000 women visited the clinic last year, receiving primary care, screenings, harm reduction, education, and vaccines. Along with WLP co-founder Dr. Eileen Reilly, Dr. O'Connell also leads a nighttime street team that

provides outreach and care for "rough sleepers," some of whom visit WLP during the day for rest, nutrition, and essential services.

Each year, Spaghetti Dinner raises funds that sustain the critical services we provide. WLP would like to thank all our supporters, sponsors, and partners who have lent their support at past events.

For more information on Women's Lunch Place, visit womenslunchplace.org.



KEIKO HIROMI PHOTOS

The Fairmont Copley Hotel ballroom was host to the Women's Lunch Place Spaghetti Dinner.



Jennifer Hanlon Wigon (left), is seen with City Councilor Ed Flynn and his wife, Kristin (center).



Treble Threat.



Jim and Jill O'Connell, together with City Councilor Ruthzee Louijeune (left).



Sen. Lydia Edwards and Kristin Flynn.

SERVICE DIRECTORY



SOMERVILLE MASONRY & ROOFING 617-222-0755

FULL SERVICE ROOFING & GUTTERS TOTAL home exterior work specialist info@somervillemasonryroofing.com somervillemasonryroofing.com

YOUR BUSINESS HERE \$40/wk

JOHN J. RECCA PAINTING Interior/Exterior Commercial/Residential Fully Insured Quality Work Reasonable Rates Free Estimates reccapainting@hotmail.com 781-241-2454

PLEASE RECYCLE THIS NEWSPAPER

MFA Boston, organizes Piet Mondrian exhibition drawn from transformational gift from Maria and Conrad Janis

Special to the Sun

This fall, the Museum of Fine Arts, Boston (MFA), presents an exhibition of works by Piet Mondrian (1872–1944), celebrating a transformational gift that elevates the MFA to one of the leading institutions outside of the Netherlands for the study and display of the artist's early work. On view from November 11, 2023 through April 28, 2024, Mondrian: Foundations is the first monographic exhibition of Mondrian's work at the MFA, presenting 11 paintings and 17 works on paper that span his entire career, with an empha-

sis on his early years, when he worked in a lesser known realistic style.

Around 1920, Mondrian began to paint some of the most famous and recognizable artworks of the last century. These abstract paintings, characterized by white backgrounds, spare black lines and blocks of primary color, have become ubiquitous in today's popular culture and are regarded as the heart of Mondrian's achievement. But the path to these works—Mondrian's artistic roots in Holland in the late 19th century and subsequent evolution of his work—are far less known. His early paintings

capture the characteristic Dutch landscape, filled with canals and windmills, fields and farmhouses, flowers and trees. When seen side by side with Mondrian's later, non-representational paintings, they reveal an artist who constantly reinvented himself as he absorbed new influences on his journey toward abstraction.

A majority of the works in Mondrian: Foundations are drawn from a gift to the MFA from Maria and Conrad Janis by and through the Janis Living Trust. In addition to 34 paintings, drawings and watercolors by Mondrian—24 of which are on view in the exhibition—the

gift included more than 200 works that significantly reshape the Museum's holdings of early and mid-20th century art from Europe and the U.S. Highlights include a group of five sculptures by Jean Arp that enable the MFA to show the full chronological range of his work; works on paper by Fernand Léger, Alberto Giacometti, Paul Klee, Pablo Picasso and Franz Kline; the Museum's first work by Anna Mary Moses ("Grandma Moses"); and a group of seven works by the self-taught artist Morris Hirshfeld.

The late Conrad Janis (1928–2022) was a jazz trombonist and

actor who starred in film and television during Hollywood's "Golden Age" in the 1950s and 1960s. He inherited a major art collection from his father, renowned art dealer and writer Sidney Janis. In 2009, he gifted Composition with Blue, Yellow and Red—an important 1927 work by Mondrian that exemplifies his trademark style of pure geometries—to the MFA, making it the first painting by the artist to enter the Museum's collection.

Composition with Blue, Yellow and Red is the most recent

(PIET MONDRIAN Pg. 11)

NEWS IN BRIEF

Continued from Page 10

LIBRARY SHUTTLE TO BPL'S PARKER HILL BRANCH BEGINS NOV. 1

In an agreement with Age Strong, a shuttle service will begin on Nov. 1st to the Boston Public Library's Parker Hill Branch. The service will run on Mondays and Wednesdays and can accommodate eight people who have made reservations for the 10 a.m. pickup at the South End Library. The return will be at noon. The link for reserving a spot on the shuttle is <https://bpl.libcal.com/calendar/19067/shuttle>.

Parker Hill is a smaller branch where South Enders can get to know the staff, as well as pick up and drop off books. If you want to pick up your "hold" books at Parker Hill, you will need to go to the bpl.org website, sign into your Account, and go to 'My Settings.' Then select 'Account Preferences/Hold and Pickup Location/Change.' There you can select 'Parker Hill' and save your selection. The books you put on hold will then be sent to Parker Hill and you will be noti-

fied in the usual way when they arrive. There is no fee for "overdue" books; whenever the book is returned, the fee is removed.

FREE DANCE MOVEMENT CLASS SCHEDULED NOV. 2

The South End Branch Library presents 'Class Movement with Urbanity Dance'- a free dance movement class for all dance levels for ages 18 and up - on Thursday, Nov. 2, from 2 to 3 p.m. at 725 Harrison Ave., Suite 100.

For more information and registration, contact Christina Jones southend@bpl.org.

SOWA ARTISTS GUILD TO HOLD NOVEMBER EVENTS

SoWa Artists Guild will hold its SoWa First Friday on Nov. 3 from 5 to 9 p.m., as well as its SoWa Sundays on Nov. 5, 12, and 19 from 11 a.m. to 4 p.m., and on Nov. 26 from 10 a.m. to 7 p.m.

Also, SoWa Artists Guild will

open on Black Friday, Nov. 24, from 10 a.m. to 9 p.m., and on Small Business Saturday, Nov. 25, from 10 a.m. to 10 p.m.

All events will be held at 450 Harrison Ave.

Visit <http://sowaartists.com>, <http://facebook.com/SoWaArtistsGuild>, or <https://www.instagram.com/sowaartistsguild/> for more information.

HARVEST FESTIVAL AND AUCTION IN SUPPORT OF BOTH WLP AND NABB SET FOR NOV. 9

Women's Lunch Place and the Neighborhood Association of the Back Bay will hold the Harvest Festival & Auction on Thursday, Nov. 9, from 6 to 9 p.m. at Women's Lunch Place dining room at 67 Newbury St.

Enjoy a delicious harvest of culinary selections, wine, and craft beers, and get some early holiday shopping done during the event's Silent Auction, which will feature sports tickets, restaurant gift cards, and more. The

event will benefit both WLP and NABB.

A highlight of the evening will be a boutique where shelter guests will sell items they have made during the many classes that WLP offers. Handmade jewelry, knit wear, decoupage shells and more will be displayed for purchase. The artist will receive all of the proceeds.

Single ticket prices for Harvest Festival are \$125, and sponsorships are also available.

Visit <https://womenslunchplace.org/nabb> for more information.

NEW BOOK CLUB SET TO MEET NOV. 14 AND DEC. 12 AT FOMU

The Scoop: Book Club -the South End Branch of the Boston Public Library's new book club - will meet on Nov. 14 and Dec. 12 from 2 to 3 p.m. at FoMu Ice Cream at 655 Tremont St. (Purchases are encouraged but not required.)

November's book is "The Night Watchman" by Louise Erdrich, and December's book

will be "Five Tuesdays in Winter" by Lily King. Pick up a copy of November's book every Thursday in October at United South End Settlements or for December's book, every Thursday morning in November at USES, or send an email to schedule a pickup appointment. The eBook is also available on Hoopla Digital (with no waitlist).

To register, email southend@bpl.org.

VIRTUAL COMMUNITY MEETING ON PROPOSED BACK BAY FENS PATHWAYS DESIGN IMPROVEMENTS SCHEDULED FOR NOV. 15

The City of Boston will hold a virtual community meeting on proposed design improvements to the Back Bay Fens Pathways on Wednesday, Nov. 15, at 6 p.m. (Join the meeting then at bit.ly/bbf-pathways.)

Visit the project page at ProjectPage: Boston.gov/Fens-Pathways for more information.

LEGAL NOTICES

LEGAL NOTICE

Notice of Self Storage Sale
Please take notice
Prime Storage - Boston
South End located
at 100 Southampton
St., Boston, MA 02118

intends to hold an auction to sell the goods stored by the following tenants at the storage facility. The sale will occur as an online auction via www.storage-treasures.com on 11/8/2023 at

12:00PM. Unless stated otherwise the description of the contents are household goods and furnishings. Kandra Evans unit #4050; Maria Ramos-Fuentes unit #4063; Jennifer Burns unit #4150; Nicole

Abrate unit #4161; Eric Roque unit #4187; Robert Cayman unit #5042; Marc Narcisse unit #6003. All property is being stored at the above self-storage facility. This sale may be withdrawn at any time

without notice. Certain terms and conditions apply. See manager for details.
10/19/23, 10/26/23

BS

LEGAL NOTICE

Notice of Self Storage Sale
Please take notice
Prime Storage - Boston
Traveler St. located at
33 Traveler St., Boston,
MA 02118 intends to

hold an auction to sell the goods stored by the following tenants at the storage facility. The sale will occur as an online auction via www.storage-treasures.com on 11/8/2023 at 12:00 PM. Unless stated other-

wise the description of the contents are household goods and furnishings. Lance van Alstyne unit #251; Andrew Roach unit #261; Victor McKelver unit #356; Jodi Bage unit #725. All property is being stored

at the above self-storage facility. This sale may be withdrawn at any time without notice. Certain terms and conditions apply. See manager for details.
10/19/23, 10/26/23

BS

Real Estate Transfers

| BUYER 1 BACK BAY | SELLER 1 | ADDRESS | PRICE |
|---|---|--|--|
| Doucette, William N Lesser Rt | Marjorie A Bowes Nt Irt 257 Commonwealth Ave LLC | 160 Commonwealth Ave #411 257 Commonwealth Ave #3 | \$800,000 \$13,800,000 |
| Zhong, Zixiu Andrusyak, Oleksiy | Lee, Jung N Dhupar, Neha | 520 Beacon St #6C 636-638 Beacon St #305 | \$680,000 \$522,000 |
| Erdin, Ethem Y Post, Jason Area Family Invs Lp | Willey, Daniel P Isobe, Takashi Doherty, Sean T | 909 Beacon St #4 428 Marlborough St #8 360 Newbury St #501 | \$1,158,000 \$490,000 \$1,425,000 |
| BEACON HILL | | | |
| Heher, Yael K Mv2022 LLC Boal, Peter | Stetson, Anne Rhs Delaware Holdings LL Serre, Stephane | 4 Acorn St 78 Beacon St 65 Pinckney St #2 | \$3,550,000 \$19,000,000 \$1,050,000 |
| BAY VILLAGE/SOUTH END/KENMORE | | | |
| Carol Gram Deane T Doherty, Sean T Mann, Elaine Maki Ohana LLC Cohen, Lily M Greenwich Pk 2 LLC Frederick B Dent Iii Lt Batt, Martin Carson, Bianca E Hume Hou Ft Brooke Zhen Rt Raffles Rt Bernardino, Frank Belbusti, Viviana Salinas Industries T Goodman, Jennifer C | Margaret Mccarthy Qprt Madison, Christopher B Chewning, Rush H Siegel, Matthew 40 Dwight Street LLC Hillard, Matthew Hayes S Olofson RET Leung, Horace H Amos, Jason M Ray, Sekhar Ts Residences Hld LLC Ts Residences Hld LLC Maruskin, Kathryn E Morin, Craig Sathappan Ft Ain, Danielle L | 300 Boylston St #1002 219-223 Columbus Ave #702 27 Isabella St #8 234 Causeway St #718 40 Dwight St #2 29 Greenwich Park #2 47 Milford St #3 32 Traveler St #612 3531 Washington St #324 43 Westland Ave #307 430 Stuart St #34A 430 Stuart St #34B 80 E Brookline St #1 30-34 E Concord St #6 131 Park Dr #36 251 Shawmut Ave #1 | \$9,750,000 \$2,800,000 \$2,525,000 \$964,500 \$810,000 \$2,210,000 \$2,325,000 \$800,000 \$789,000 \$822,500 \$11,000,000 \$13,250,000 \$740,000 \$536,000 \$610,000 \$2,475,000 |
| WATERFRONT/DOWNTOWN | | | |
| Thomas & Sylvia Ctney RET Mt 2008 LLC | Scallen, Julie A Phitayakorn, Chet | 1 Avery St #20D 1 Franklin St #2008 | \$2,400,000 \$2,100,000 |

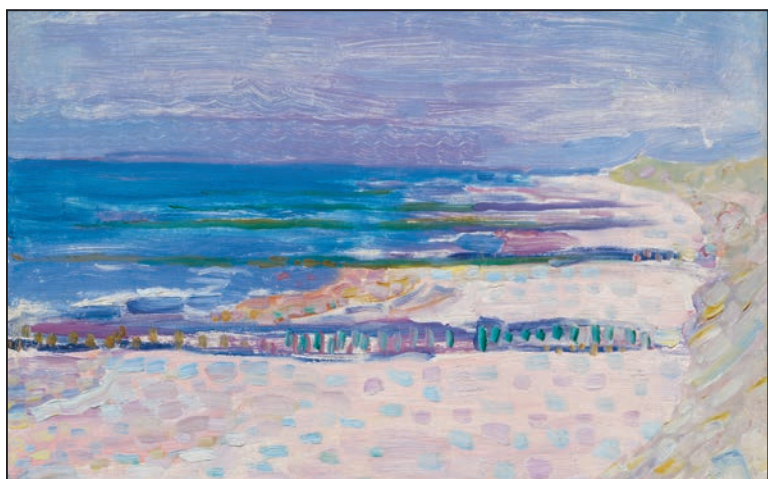
PIET MONDRIAN (from pg. 10)

work by Mondrian on view in the exhibition, which also features his earliest known painting, made when he was just 15 years old. This work, *The Large Ponds*

in the Hague Forest (1887), is on loan to the MFA from Rose Marie and Eijk van Otterloo, longtime supporters of the Museum who are among the founders

of the Center for Netherlandish Art, an innovative research center for the study and appreciation of Dutch and Flemish art. A landmark gift of 113 paintings from the 17th century, made in 2017 by the Van Otterloos and Susan and Matthew Weatherbie, elevated the MFA's holdings to one of the premier collections of Dutch art in the world. The addition of modern works by Mondrian from the Janis collection complements the MFA's holdings of 17th-century Dutch art, as well as its excellent collection of Dutch 19th- and 20th-century works on paper.

"Mondrian: Foundations" is supported by the Benjamin A. Trustman and Julia M. Trustman Fund.



Piet Mondrian's "Beach with Five Piers at Domburg."

Attention to Detail

PHOTOS AND TEXT BY PENNY CHERUBINO

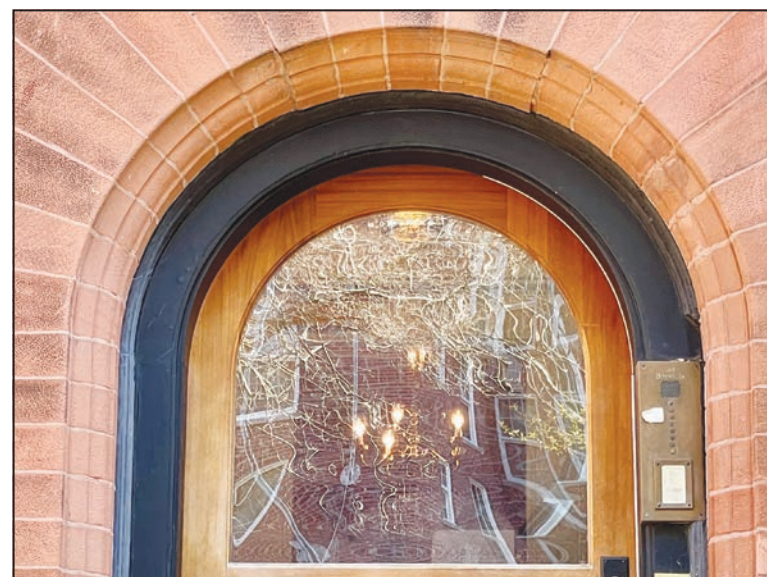
THIS WEEK'S ANSWER



The garage door in the last clue is on 330 Beacon Street, designed by Hugh Stubbins & Associates and constructed circa 1960. You can find photos and information on the five townhouses it replaced on the website, www.backbayhouses.org.

You'll find the next clue in the Fenway. Do you have a favorite building or detail you would like featured? Send an email to Penny@BostonZest.com with your suggestion.

THIS WEEK'S CLUE



BEACON COURT LISTINGS

370 BEACON STREET, RESIDENCE 3

3 BEDROOMS | 3 FULL 2 HALF BATHROOMS | 3,300 SQUARE FEET

LISTED AT \$7,000,000



360 BEACON STREET, RESIDENCE ONE

4 BEDROOMS | 4 FULL 1 HALF BATHROOMS | 4,000 SQUARE FEET

LISTED AT \$6,499,000



CAMPION & COMPANY
EXCLUSIVE LISTINGS

TRACY CAMPION
617-236-0711

TCAMPION@CAMPIONRE.COM